

The background of the slide features a photograph of two LPDA antennas mounted on a vertical tower against a clear blue sky. The antennas are long, horizontal structures with numerous vertical spikes of varying lengths extending from them. A white banner is overlaid on the image, containing the text 'LPDA ANTENNAS'.

LPDA ANTENNAS

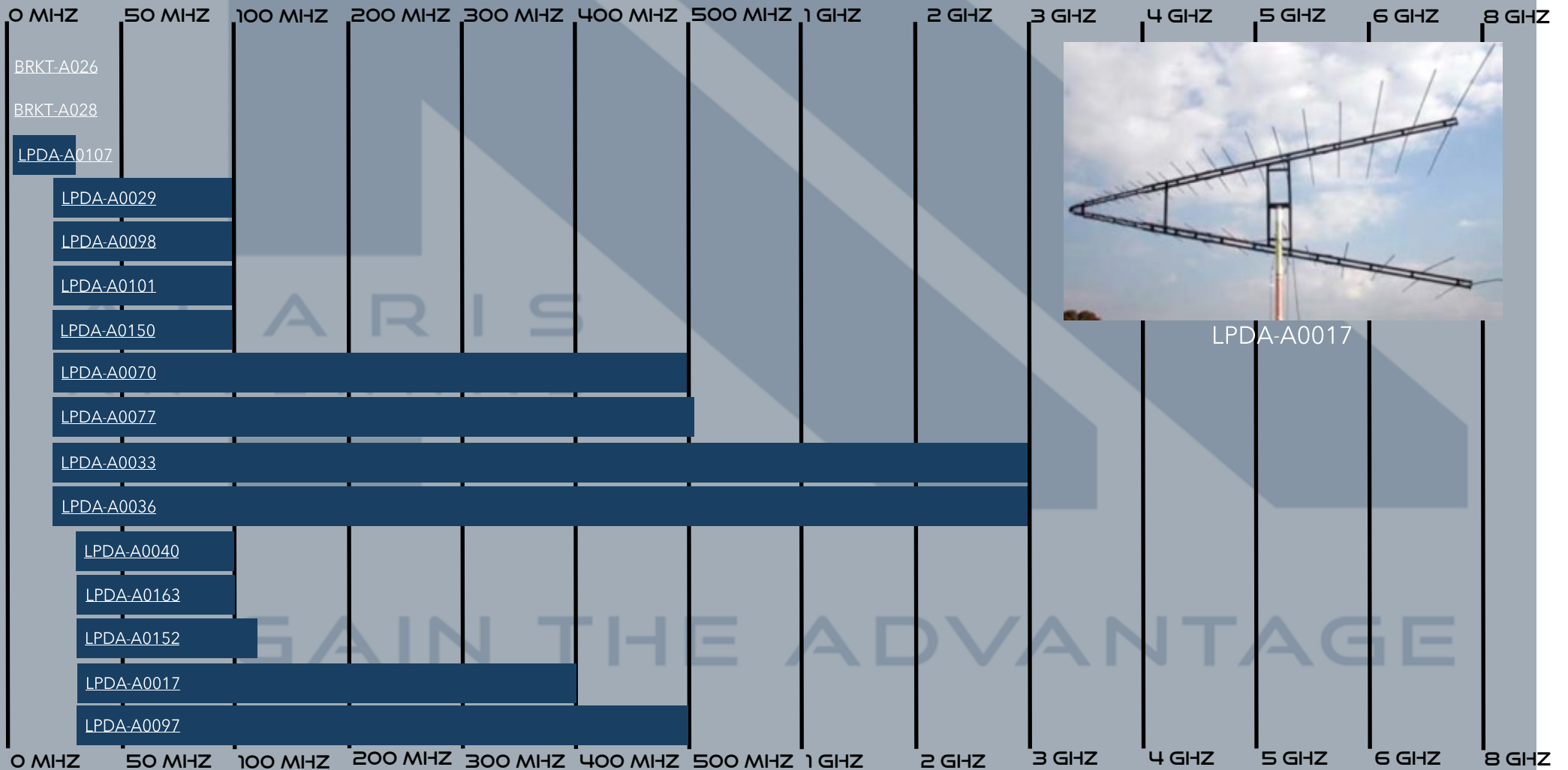


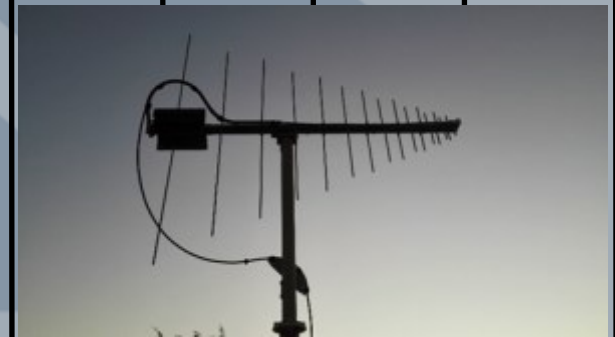
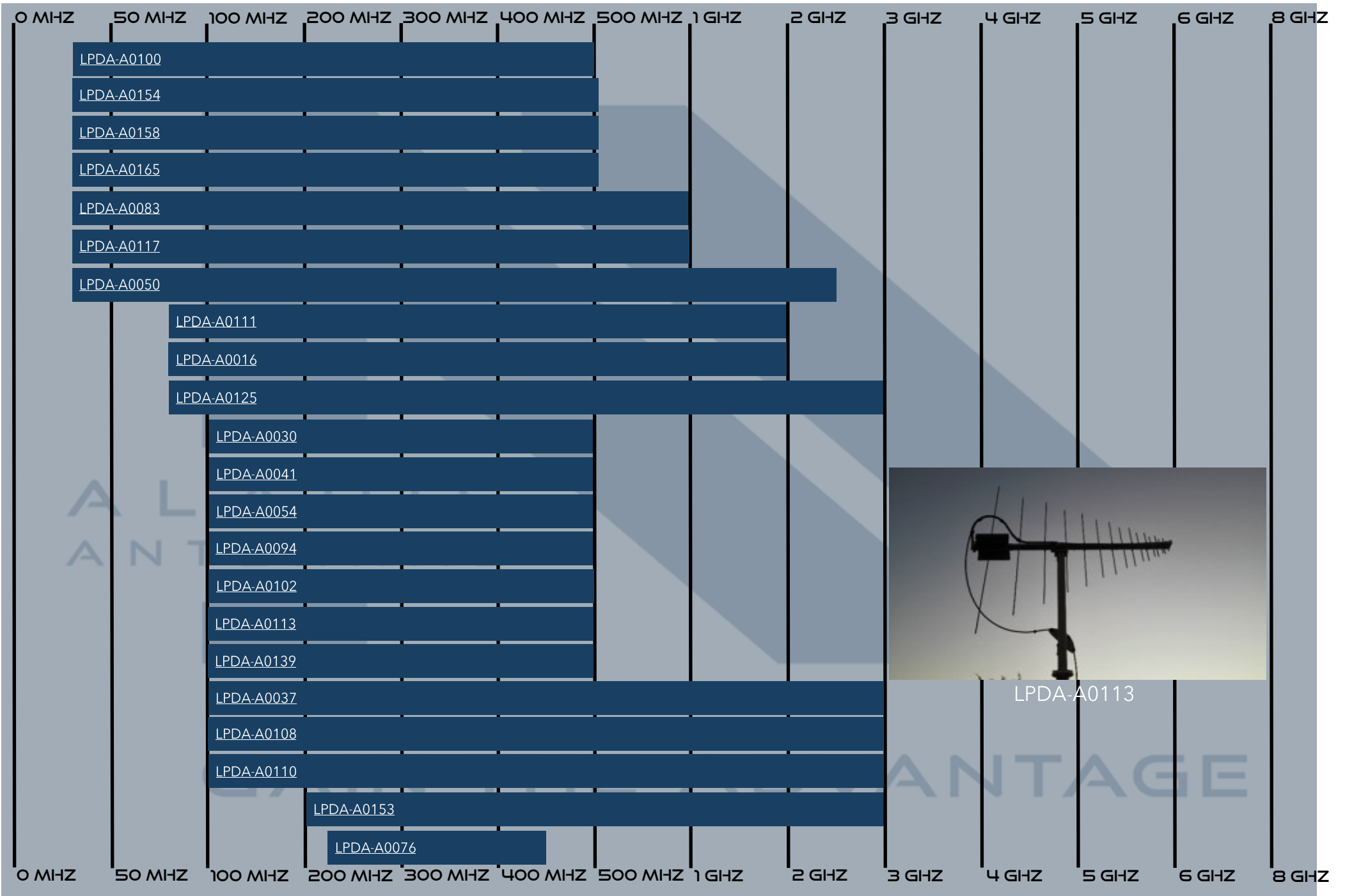
GAIN THE ADVANTAGE

LPDA ANTENNAS

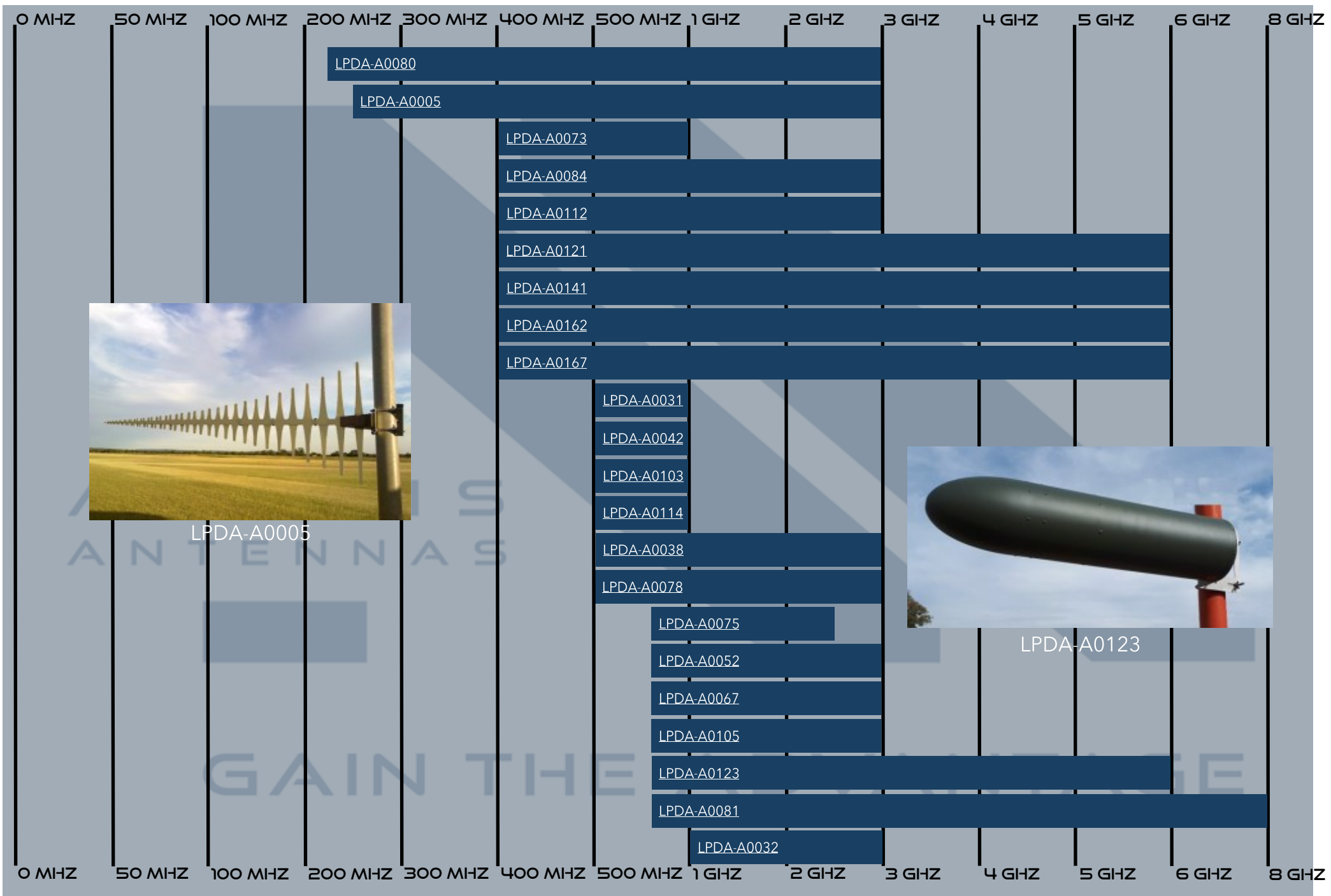
Log periodic dipole arrays (LPDAs) are wideband antennas providing directional gain and are typically used for wideband monitoring, antenna testing and high power transmit applications. Their broad frequency coverage reduces the number of antennas required in an EW system. The LPDAs in our range cover the spectrum from 2 MHz to 6 GHz. High-power versions are offered for jamming purposes, lower power versions for monitoring applications. Hybrid LPDA-dipole designs provide compact antennas which still perform at low frequencies.

HIGH POWER TRANSMIT LPDA ANTENNAS





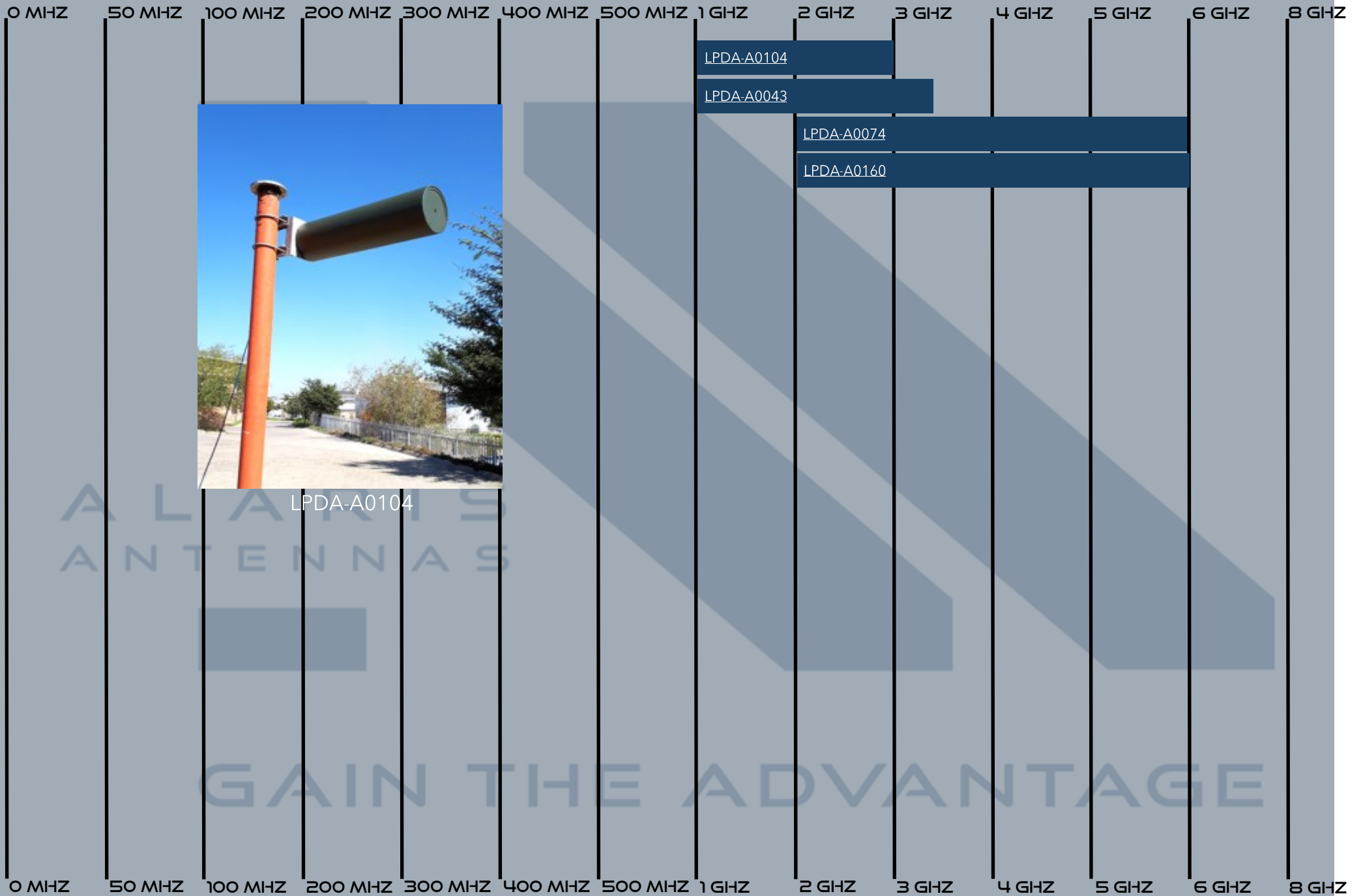
LPDA-A0113



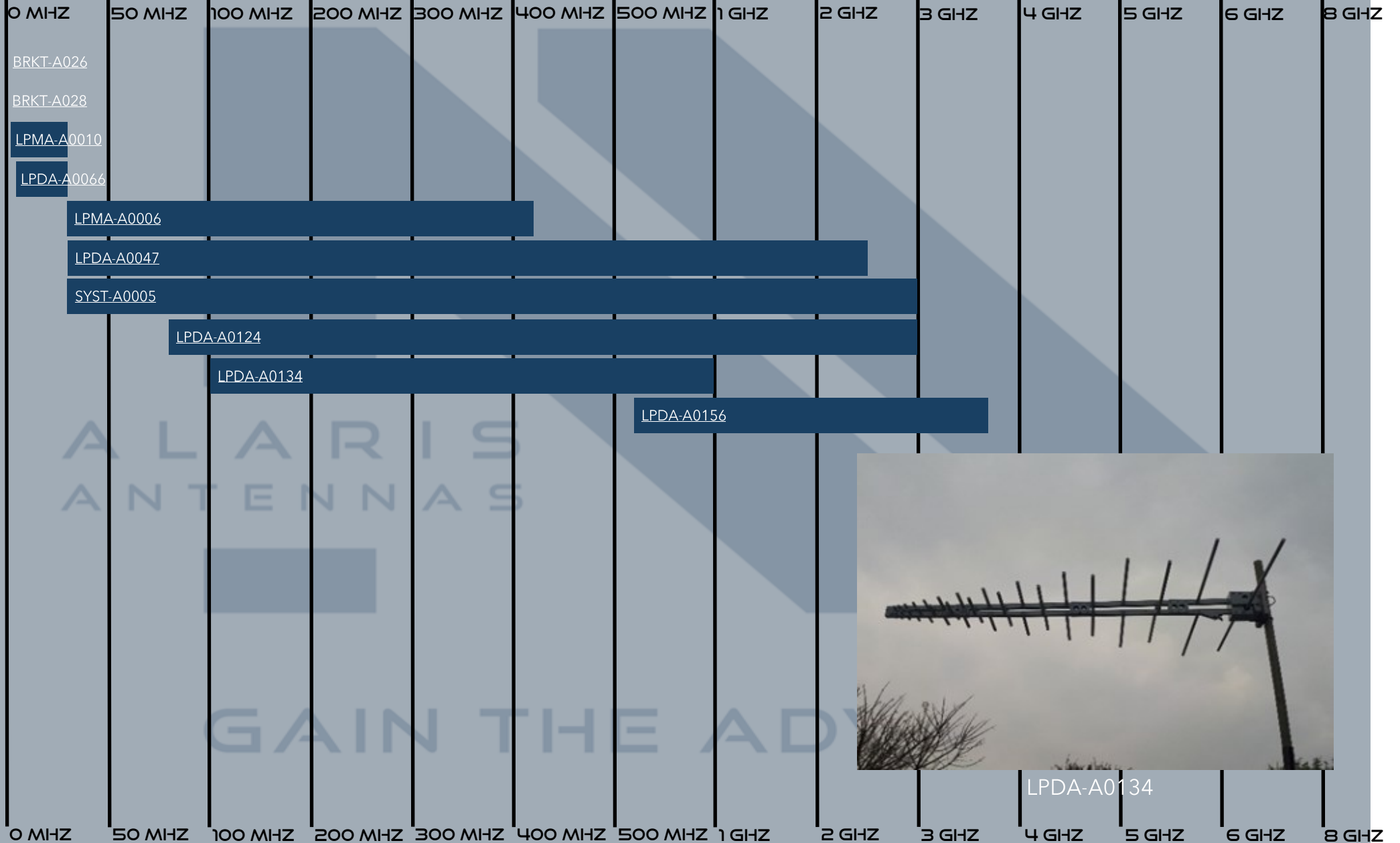
LPDA-A0005



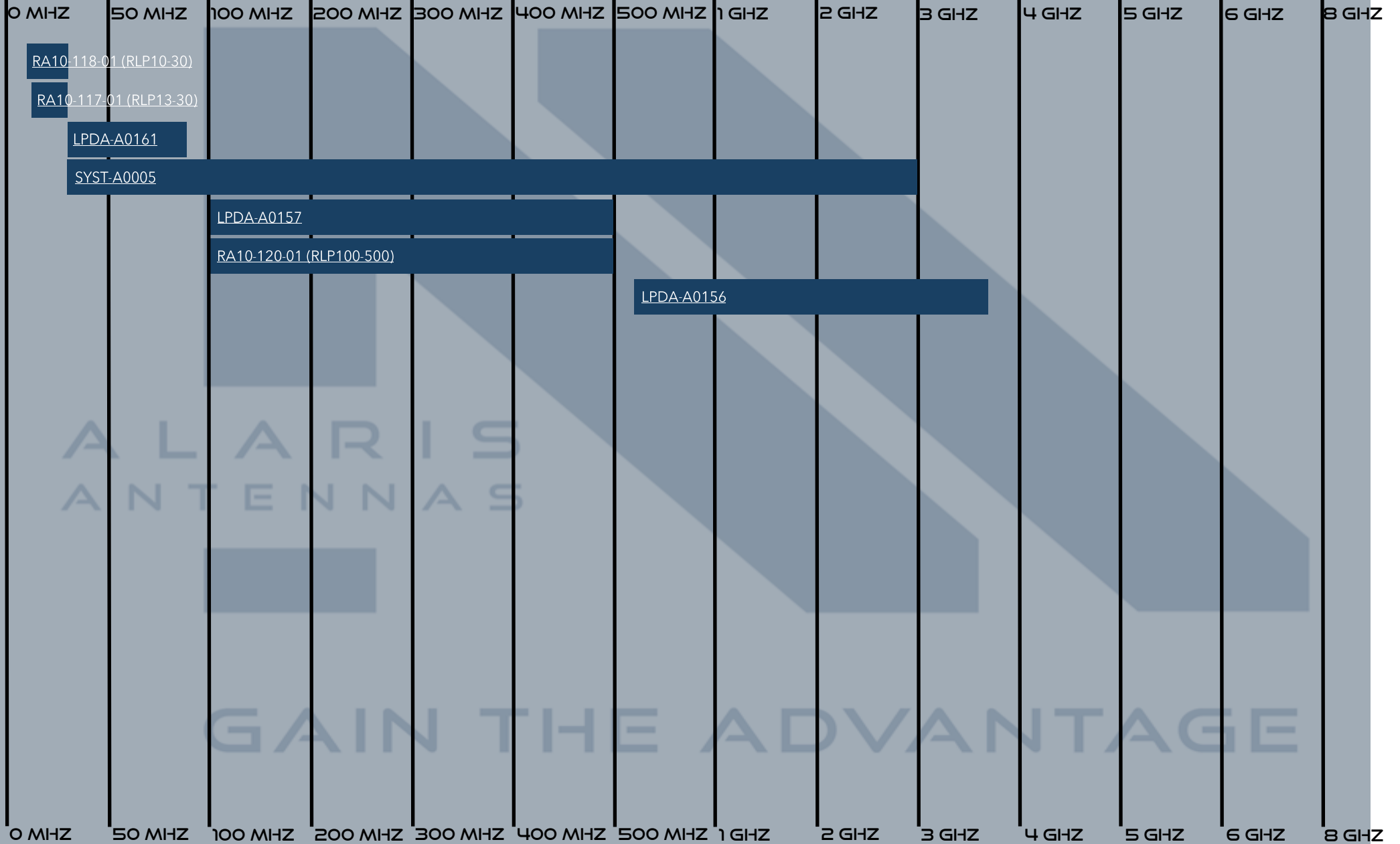
LPDA-A0123



MONITORING LPDA ANTENNAS



COMMUNICATION LPDA ANTENNAS



HIGH POWER TRANSMIT ANTENNAS

Antenna	Product Description	Frequency	Gain	Polarisation	L (mm)	D (mm)	H (mm)	W (mm)	Mass	Connector	Power
BRKT-A026	LPDA Extension Mast	-	-	-	150 mm	-	558 mm	210 mm	3 kg	-	-
BRKT-A028	Polarisation-Flipping Bracket for LPDAs	-	-	-	250 mm	-	180 mm	220 mm	2.2 kg	-	-
LPDA-A0107	Mobile HF Monitoring / High-Power LPDA	2 - 30 MHz	9 dBi	Horizontal	90000 mm	-	20000 mm	80000 mm	100 kg	7/16 (f)	2.5 kW CW
LPDA-A0029	High-Power LPDA	20 - 100 MHz	6 dBi	Adjustable, Vertical & horizontal	6320 mm	-	-	5700 mm	38 kg	7/16 (f)	2 kW
LPDA-A0098	High-Power Wire LPDA Antenna	20 - 100 MHz	6 dBi	Adjustable upon installation	8550 mm	-	560 mm	6480 mm	42 kg	7/16 (f)	1000 W
LPDA-A0101	Very High-Power LPDA	20 - 100 MHz	6 dBi	Adjustable, vertical & horizontal	7036 mm	-	-	8708 mm	53 kg	1 5/8" (f)	5 kW
LPDA-A0150	Wideband Foldable LPDA Antenna	20 - 100 MHz	6 dBi typical	Adjustable, vertical & horizontal	6400 mm	-	5700 mm	550 mm	< 45 kg	7/16 (f)	2000 W
LPDA-A0070	Dual-Polarised LPDA Antenna	20 - 500 MHz	5.5 dBi	Dual (vertical & horizontal)	6700 mm	-	-	5700 mm	46 kg	N-Type (f)	100 W
LPDA-A0077	High-Power LPDA Antenna	20 - 520 MHz	> 2.5 to > 5 dBi	Adjustable with deployment	5200 mm	-	-	7000 mm	< 50 kg	7/16 (f)	1000 W CW
LPDA-A0033	Wideband LPDA Antenna	20 - 3000 MHz	6 dBi	Linear (vertical or horizontal)	6200 mm	-	-	5700 mm	32 kg	7/16 (f)	1000 W CW
LPDA-A0036	Wideband LPDA Antenna	20 - 3000 MHz	6 dBi	Adjustable (vertical or horizontal)	2882 mm	-	829 mm	2804 mm	20 kg	7/16 (f)	1000 W
LPDA-A0040	Dual-Polarised LPDA Antenna	30 - 100 MHz	5 dBi	Dual	3600 mm	-	3700 mm	3700 mm	< 45 kg	7/16 (f)	1 kW
LPDA-A0163	Wideband Foldable LPDA Antenna	30 - 100 MHz	See Data Sheet	Adjustable (vertical or horizontal)	4500 mm	-	3050 mm	550 mm	< 28 kg	7/16 (f)	1000 W
LPDA-A0152	High-Power Compact LPDA	30 - 120 MHz	6 dBi	Adjustable (vertical or horizontal)	4100 mm	-	3050 mm	-	< 46 kg	7/16 (f)	2 kW
LPDA-A0017	Wideband Log Periodic Dipole Array	30 - 400 MHz	8.5 dBi	Linear (vertical or horizontal)	6392 mm	-	-	2590 mm	57 kg	7/16 (f)	2 kW
LPDA-A0097	Wideband Wire LPDA Antenna	30 - 500 MHz	See Data Sheet	Linear (vertical or horizontal)	1875 mm	-	3550 mm	420 mm	< 11 kg	N-Type (f)	200 W
LPDA-A0100	Wideband Wire LPDA Antenna	30 - 500 MHz	See Data Sheet	Linear (vertical or horizontal)	1900 mm	-	3550 mm	420 mm	< 15 kg	7/16 (f)	1000 W

Antenna	Product Description	Frequency	Gain	Polarisation	L (mm)	D (mm)	H (mm)	W (mm)	Mass	Connector	Power
LPDA-A0154	Wideband Foldable LPDA Antenna	30 - 512 MHz	See Data Sheet	Adjustable (vertical or horizontal)	4700 mm	-	3050 mm	185 mm	< 25 kg	7/16 (f)	1000 W
LPDA-A0158	Wideband Modular Foldable LPDA Antenna	30 - 512 MHz	See Data Sheet	Adjustable (vertical & horizontal)	4810 mm	-	5350 mm	182 mm	< 43 kg	7/16 (f)	1000 W
LPDA-A0165	Wideband Foldable LPDA Antenna	30 - 512 MHz	7 dBi typical	Adjustable (vertical & horizontal)	5010 mm	-	5350 mm	550 mm	< 28 kg	7/16 (f)	1000 W
LPDA-A0083	Wideband LPDA	30 - 1000 MHz	4 dBi	Adjustable (vertical & horizontal)	3500 mm	-	4500 mm	200 mm	25 kg	N-Type (f)	1 kW
LPDA-A0117	Wideband LPDA	30 - 1000 MHz	4 dBi	Adjustable (vertical & horizontal)	3500 mm	-	4500 mm	200 mm	25 kg	N-Type (f)	1 kW
LPDA-A0050	High-Power LPDA Antenna	30 - 2500 MHz	> 4 dBi	Adjustable (vertical & horizontal)	6150 mm	-	-	5000 mm	38 kg	7/16 (f)	1000 W
LPDA-A0111	Wideband Log Periodic Dipole Array	80 - 2000 MHz	> 8 dBi	Linear (vertical or horizontal)	2200 mm	-	-	2000 mm	8.5 kg	N-Type (f)	300 W
LPDA-A0016	Wideband LPDA Antenna	80 - 2000 MHz	6 dBi typical	Adjustable (vertical & horizontal)	2200 mm	-	-	2000 mm	< 10 kg	N-Type (f)	300 W
LPDA-A0125	Wideband Wire LPDA	80 - 3000 MHz	> 6 dBi	Adjustable (vertical & horizontal)	2650 mm	-	200 mm	2000 mm	< 18 kg	7/16 (f)	1000 W CW
LPDA-A0030	High-Power LPDA	100 - 500 MHz	7 dBi	Adjustable (vertical & horizontal)	1920 mm	-	-	1700 mm	7 kg	7/16 (f)	1 kW
LPDA-A0041	Dual-Polarised LPDA Antenna	100 - 500 MHz	> 6 dBi	Dual Linear	2100 mm	-	-	1600 mm	< 13 kg	7/16 (f)	500 W
LPDA-A0054	High-Power LPDA	100- 500 MHz	7 dBi	Linear (vertical or horizontal)	1700 mm	-	-	1600 mm	16 kg	7/16 (f)	1 kW
LPDA-A0094	High-Power Wire LPDA	100 - 500 MHz	6 dBi	Linear (vertical or horizontal)	2450 mm	-	200 mm	1800 mm	12 kg	7/16 (f)	1000 W
LPDA-A0102	Very High-Power LPDA	100 - 500 MHz	7 dBi	Linear (vertical or horizontal)	1920 mm	-	-	1500 mm	14 kg	1 5/8" (f)	5 kW CW
LPDA-A0113	High-Power LPDA	100 - 500 MHz	7 dBi	Linear (vertical or horizontal)	1820 mm	-	-	1700 mm	16 kg	7/16 (f)	2 kW
LPDA-A0139	Tactical LPDA	100 - 500 MHz	> 7 dBi	Linear (vertical or horizontal)	1779 mm	-	-	1500 mm	7 kg	N-Type (f)	200 W CW
LPDA-A0037	Wideband LPDA Antenna	100 - 3000 MHz	6 dBi	Adjustable (vertical & horizontal)	1960 mm	-	-	1600 mm	-	7/16 (f)	500 W

Antenna	Product Description	Frequency	Gain	Polarisation	L (mm)	D (mm)	H (mm)	W (mm)	Mass	Connector	Power
LPDA-A0108	Dual-Polarised LPDA Antenna	100 - 3000 MHz	> 6 dBi	Dual linear	2100 mm	-	1600 mm	1600 mm	< 18 kg	7/16 (f)	500 W
LPDA-A0110	Wideband LPDA Antenna	100 - 3000 MHz	6 dBi	Adjustable (vertical & horizontal)	1900 mm	-	-	1600 mm	-	7/16 (f)	500 W
LPDA-A0153	Wideband LPDA Antenna	200 - 3000 MHz	6 dBi typical	Adjustable (vertical & horizontal)	1080 mm	-	-	840 mm	< 10 kg	7/16 (f)	500 W
LPDA-A0076	Foldable Wire LPDA	225 - 450 MHz	6 dBi	Linear (vertical or horizontal)	850 mm	-	800 mm	150 mm	< 2 kg	N-Type (f)	200 W
LPDA-A0080	Wideband Wire LPDA	225 - 3000 MHz	6 dBi	Linear (vertical or horizontal)	1300 mm	-	800 mm	150 mm	< 2.2 kg	N-Type (f)	200 W
LPDA-A0005	Wideband Directional Antenna	250 - 3000 MHz	11 dBi	Linear (vertical or horizontal)	1703 mm	-	-	679 mm	8 kg	N-Type (f)	50 W
LPDA-A0073	Wideband Log Periodic Dipole Array	400 - 1000 MHz	10 ± 1 dBi	Linear (vertical or horizontal)	1500 m	-	-	400 mm	5 kg	N-Type (f)	500 W
LPDA-A0084	High-Power LPDA Antenna	400 - 3000 MHz	> 6.5 dBi	Adjustable (vertical & horizontal)	580 mm	-	-	460 mm	< 10 kg	N-Type (f)	250 W CW
LPDA-A0112	High-Power LPDA Antenna	400 - 3000 MHz	> 6.5 dBi	Adjustable (vertical & horizontal)	< 720 mm	-	470 mm	80 mm	< 10 kg	N-Type (f)	250 W CW
LPDA-A0121	High-Power LPDA Antenna	400 - 6000 MHz	8 dBi	Linear	770 mm	-	-	450 mm	3.7 kg	N-Type (f)	100 W
LPDA-A0141	High-Power LPDA Antenna	400 - 6000 MHz	8 dBi	Linear	770 mm	-	-	450 mm	3.7 kg	N-Type (f)	150 W
LPDA-A0162	Dual Port High-Power LPDA Antenna	400 - 6000 MHz	See Data Sheet	Linear	625 mm	-	710 mm	160 mm	< 5 kg	N-Type (f)	100 W CW
LPDA-A0167	Tri Port High-Power LPDA Antenna	400 - 6000 MHz	See Data Sheet	Linear	600 mm	-	880 mm	160 mm	< 6 kg	N-Type (f)	100 W CW
LPDA-A0031	High-Power LPDA Antenna	500 - 1000 MHz	9 dBi	Linear (vertical or horizontal)	1385 mm	170 mm	-	292 mm	4.2 kg	7/16 (f)	1000 W
LPDA-A0042	Dual-Polarised LPDA Antenna	500 - 1000 MHz	> 6 dBi	Dual	600 mm	-	-	450 mm	< 7 kg	7/16 (f)	500 W
LPDA-A0103	Very High-Power LPDA	500 - 1000 MHz	> 10 dBi	Linear (vertical or horizontal)	1753 mm	-	-	345 mm	7 kg	EIA 1 5/8	4000 W
LPDA-A0114	High-Power LPDA Antenna	500 - 1000 MHz	> 10 dBi	Adjustable (vertical & horizontal)	1650 mm	250 mm	-	320 mm	4.6 kg	7/16 (f)	2000 W
LPDA-A0038	Wideband LPDA Antenna	500 - 3000 MHz	10 dBi	Adjustable (vertical & horizontal)	1802 mm	-	-	311 mm	7 kg	7/16 (f)	500 W CW

Antenna	Product Description	Frequency	Gain	Polarisation	L (mm)	D (mm)	H (mm)	W (mm)	Mass	Connector	Power
LPDA-A0078	High-Power LPDA Antenna	500 - 3000 MHz	> 7 dBi	Adjustable (vertical & horizontal)	< 720 mm	-	470 mm	80 mm	< 10 kg	7/16 (f)	1000 W CW
LPDA-A0075	Wideband Directional Antenna	800 - 2500 MHz	7 dBi	Linear (vertical or horizontal)	380 mm	90 mm	-	320 mm	800 g	SMA (f)	10 W
LPDA-A0052	High-Power LPDA Antenna	800 - 3000 MHz	12 dBi	Vertical	< 720 mm	-	470 mm	80 mm	4.5 kg	7/16 (f)	500 W CW
LPDA-A0067	High-Power LPDA Antenna	800 - 3000 MHz	12 dBi	Vertical	< 720 mm	-	470 mm	80 mm	4.5 kg	N-Type (f)	200 W
LPDA-A0105	High-Power LPDA Antenna Marine Version	800 - 3000 MHz	12 dBi	Vertical	< 720 mm	-	470 mm	80 mm	4.5 kg	7/16 (f)	500 W CW
LPDA-A0123	Wideband LPDA Antenna	800 - 6000 MHz	> 10 dBi	Linear (vertical or horizontal)	1000 mm	203 mm	-	-	6 kg	7/16 (f)	300 W
LPDA-A0081	Ultra-Wideband Log Periodic Antenna	800 - 8000 MHz	7 dBi	Linear (vertical or horizontal)	380 mm	-	90 mm	320 mm	< 1 kg	N-Type (f)	50 W
LPDA-A0032	Wideband LPDA Antenna	1000 - 3000 MHz	9 dBi	Linear (vertical or horizontal)	700 mm	170 mm	-	-	4 kg	7/16 (f)	300 W
LPDA-A0104	High-Power Wideband LPDA	1000 - 3000 MHz	9 dBi	Linear (vertical or horizontal)	700 mm	170 mm	-	-	4 kg	EIA 1 5/8"	1000 W
LPDA-A0043	Dual-Polarised LPDA Antenna	1000 - 3400 MHz	> 6 dBi	Dual	250 mm	-	-	350 mm	< 3 kg	7/16 (f)	125 W
LPDA-A0074	Wideband Directional Antenna	2000 - 6000 MHz	8.5 dBi	Linear (vertical or horizontal)	380 mm	90 mm	-	320 mm	800 g	SMA (f)	20 W
LPDA-A0160	High-Power LPDA Antenna	2000 - 6000 MHz	> 9 dBi	Linear	105 mm	-	-	341 mm	TBD	N-Type (f)	See Data Sheet

GAIN THE ADVANTAGE

MONITORING ANTENNAS

Antenna	Product Description	Frequency	Gain	Polarisation	L (mm)	D (mm)	H (mm)	W (mm)	Mass	Connector	Power
BRKT-A026	LPDA Extension Mast	-	-	-	150 mm	-	558 mm	210 mm	3 kg	-	-
BRKT-A028	Polarisation-Flipping Bracket for LPDAs	-	-	-	250 mm	-	180 mm	220 mm	2.2 kg	-	-
LPMA-A0010	HF Directional Antenna	2 - 30 MHz	12.5 dBi max	Vertical	90000 mm	-	80000 mm	20000 mm	100 kg	7/16 (f)	2.5 kW
LPDA-A0066	Monitoring LPDA Antenna	5 - 30 MHz	2 to 5.5 dBi	Adjustable, Vertical & horizontal	10300 mm	-	-	20200 mm	200 kg	N-Type (f)	Monitoring Applications
LPMA-A0006	LPMA Antenna	30 - 420 MHz	6 to 8 dBi	Vertical	3000 mm	-	2500 mm	250 mm	N/A	N-Type (f)	N/A
LPDA-A0047	Wideband LPDA Antenna	30 - 2500 MHz	7 dBi	Adjustable (vertical & horizontal)	5000 mm	-	-	4000 mm	38 kg	N-Type (f)	Receive Only
SYST-A0005	LPDA Marine Monitoring System with Rotator	30 - 3000 MHz	4 dBi	Vertical	-	-	5700 mm	-	150 kg	-	200 W
LPDA-A0124	Wideband Wire LPDA	80 - 3000 MHz	> 6 dBi	Adjustable (vertical & horizontal)	2650 mm	-	200 mm	2000 mm	< 16 kg	N-Type (f)	Receive Only
LPDA-A0134	Wideband Maritime Log Periodic Dipole Array	100 - 1000 MHz	> 6 dBi	Linear (vertical or horizontal)	2247 mm	-	-	1668 mm	15 kg	N-Type (f)	Receive Only
LPDA-A0156	Wide-Beam Monitoring LPDA Antenna	600 - 3700 MHz	See Data Sheet	Linear	440 mm	-	330 mm	125 mm	< 3.7 kg	N-Type (f)	Receive Only

GAIN THE ADVANTAGE

COMMUNICATIONS ANTENNAS

Antenna	Product Description	Frequency	Gain	Polarisation	L (mm)	D (mm)	H (mm)	W (mm)	Mass	Connector	Power
RA10-118-01 (RLP10-30)	10 - 30 MHz Log Periodic Dipole Array	10 - 30 MHz	9 to 10 dBi	Horizontal	8000 mm	-	-	-	40 kg	PL259	1 kW
RA10-117-01 (RLP13-30)	13 - 30 MHz Log Periodic Dipole Array	13 - 30 MHz	6 to 7 dBi	-	6000 mm	-	-	-	20 kg	PL259	1 kW
LPDA-A0161	Dual-Polarised LPDA Antenna	30 - 88 MHz	> 6 dBi	Dual Linear	1700 mm	-	1700 mm	2100 mm	< 16 kg	N-Type (f)	100 W
SYST-A0005	LPDA Marine Monitoring System with Rotator	30 - 3000 MHz	4 dBi	Vertical	-	-	5700 mm	-	150 kg	-	200 W
LPDA-A0157	Tactical Foldable LPDA Antenna	100 - 500 MHz	See Data Sheet	Adjustable (vertical or horizontal)	4400 mm	-	3100 mm	550 mm	< 25 kg	N-Type (f)	100 W
RA10-120-01 (RLP100-500)	100 - 500 MHz Log Periodic Dipole Array	100 - 500 MHz	6 dBi	Linear (vertical or horizontal)	1250 mm	-	-	1580 mm	5 kg	N-Type (f)	400 W
LPDA-A0156	Wide-Beam Monitoring LPDA Antenna	600 - 3700 MHz	See Data Sheet	Linear	440 mm	-	330 mm	125 mm	< 3.7 kg	N-Type (f)	Receive Only

ALARIS
ANTENNAS

GAIN THE ADVANTAGE